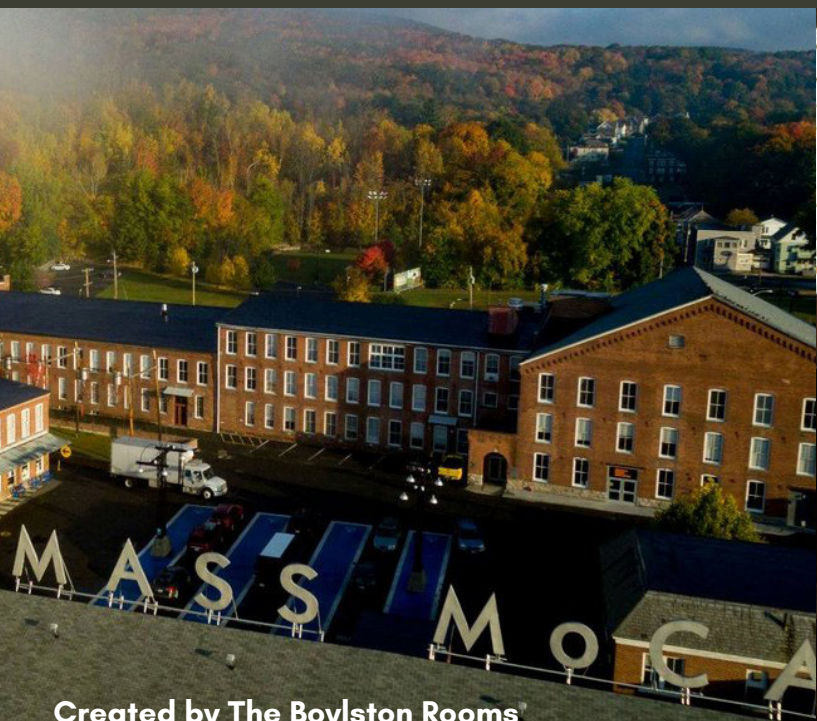




Western MA Guide



Created by The Boylston Rooms®
122 Pleasant St
Easthampton, MA 01027

So your loved one is tying the knot in Western MA and all you know about it is "it's not Boston."

Western MA is a special, strange and wonderful place. It's a magically diverse blend of college towns, former industrial hubs, and rural farms. You can travel 20 minutes in any direction and be immersed in vastly different surroundings.

As people who live and work in this area, we get the privilege of falling in love with it again and again. We asked our staff what their favorite places are so we can share some of that magic with you. With a range of interests on our team - from our art-loving marketer to our event staff who recharge out in nature - we've gathered a list of some unique places to visit when you're in town for your loved one's wedding.



Alyssa
Yogi



Sage
Art Aficionado



Erin
Holyoke Hiker



Jen
Family Ski Queen



Myles
Coaster Crusader



Walter
Cuisine Connoisseur

Family Friendly Fun

Robert E. Barrett Fishway

**1 N Bridge St
Holyoke, MA 01040**
Watch fish migrate as they're lifted over the Holyoke Dam. A fun, free, educational event.

Springfield Museums

**21 Edwards St
Springfield, MA 01103**
One stop, five museums. Art, History, Science, Dr. Seuss, and a Sculpture Garden.

Eric Carle Museum

**125 W Bay Rd
Amherst, MA 01002**
This museum is devoted to the art of the picture book and especially the children's book.

Holyoke Children's Museum

**44 Dwight St
Holyoke, MA 01040**
A children's museum featuring participatory art, exhibits related to science, daily life, and an elaborate climbing area.

Amelia Park Children's Museum

**29 S Broad St
Westfield, MA 01085**
Space-themed area, a mini-interactive town & other hands-on exhibits at this family destination.

Look Park

**300 N Main St
Florence, MA 01062**
A huge park with a steamer train, pedal boats, mini golf, a wildlife center, a water spray park, art sculptures, and more.

Holyoke Mall

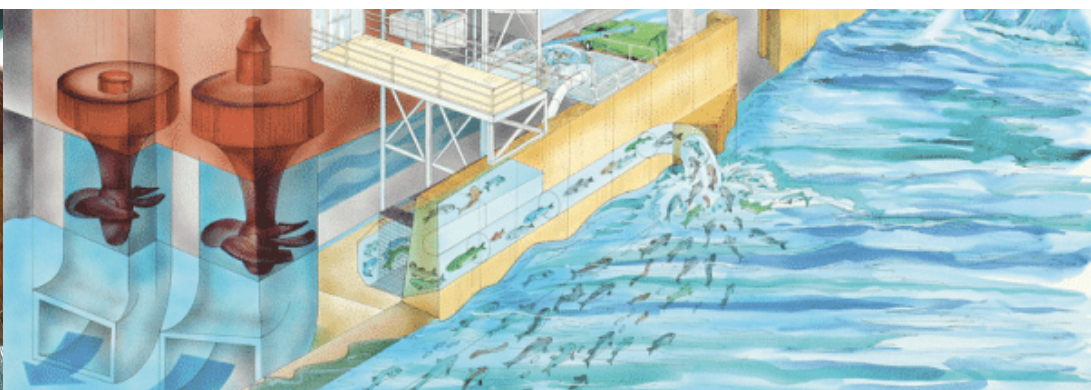
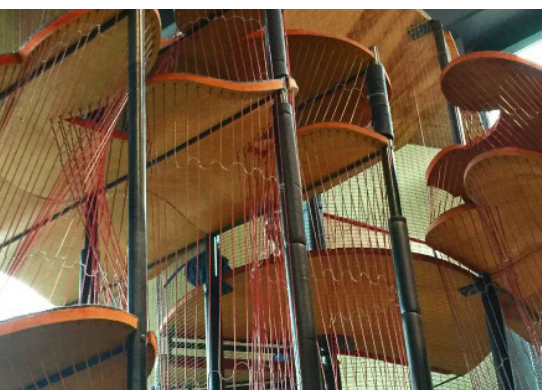
**50 Holyoke St
Holyoke, MA 01040**
A bustling mall filled with shops, food, and attire. There's also a trampoline park, Round1 Bowling, a Build-A-Bear Workshop, and Billy Beez (a massive play arena).

Hampshire Mall

**367 Russell St
Hadley, MA 01035**
Offering loads of family fun including Pinz (bowling), Fun Hub (action park), Interskate91 (skating), and Cinemark (movies).

Basketball Hall of Fame

**31000 Hall of Fame Avenue,
Springfield, MA 01105**
The Basketball Hall of Fame is a non-profit dedicated to promoting, preserving and celebrating basketball with more than 40,000 sq. ft. of basketball history.





Family Friendly Fun

Six Flags New England

1623 Main St, Agawam, MA 01001

Sitting on 235 acres, this massive amusement park has 13 roller coasters and a large water park. It even has wooden roller coasters from when the amusement park was called Riverside! Some rides include the grand carousel from 1909, family-friendly tea cups and swings, a SkyScreamer, and fast-paced coasters like The Batman which is 11 stories high, has a full 360-degree loop, a zero-g roll, and a mind-warping 5 inversions.

Outdoor Adventurers

Chapel Brook

Ashfield, MA

At the heart of the reservation lies Pony Mountain, whose nearly vertical 100-foot rock face enthralls skilled rock climbers. Down below, Chapel cascades into three waterfalls which offer a cool dip come summer.

Mount Tom

125 Reservation Rd Holyoke, MA 01040

This state reservation is noted for its biologic diversity, high cliffs, and rugged scenery. There are ample hiking trails, an observatory, and flat clearings to picnic.

Ashley Reservoir

Holyoke, MA

Walk along breath-taking raised causeways and be surrounded by water on all sides. *Park at the Elks Lodge on Whitney Ave.

Zoar Outdoor

7 Main St Charlemont, MA 01339

Explore the river with whitewater rafting, kayaking, and more. And when you're done? Walk among sky bridges and zoom around zip lines.

Central Rock Gym

165 Russell St Hadley, MA 01035

While an indoor space, it offers 24,000 sq ft of climbing terrain with ample bouldering and top rope and lead stations. Day passes are available.

Arcadia Wildlife Sanctuary

127 Combs Rd Easthampton, MA 01027

Arcadia's diverse terrain of forest, meadows, grasslands, marsh, and wetlands attracts an extraordinary variety of wildlife. You'll also find a thriving population of wildflowers.

Smith College Botanical Gardens

16 College Ln Northampton, MA 01063

The gardens consist of a fine selection of woody trees, shrubs, herbaceous plants, and an excellent collection of tropical and subtropical plants in The Lyman Conservatory.



Ashley Reservoir
Holyoke, MA

Outdoor Adventurers

Berkshire East Mountain Resort

66 Thunder Mountain Rd, Charlemont, MA

In the winter this medium-sized alpine ski area is ideal for skiing, snowboarding, and tubing. In the summer, they offer zip line canopy tours, white water rafting, and a mountain coaster. They're the first ski area to produce 100% of its electricity from onsite renewable energy.



Glacial Potholes

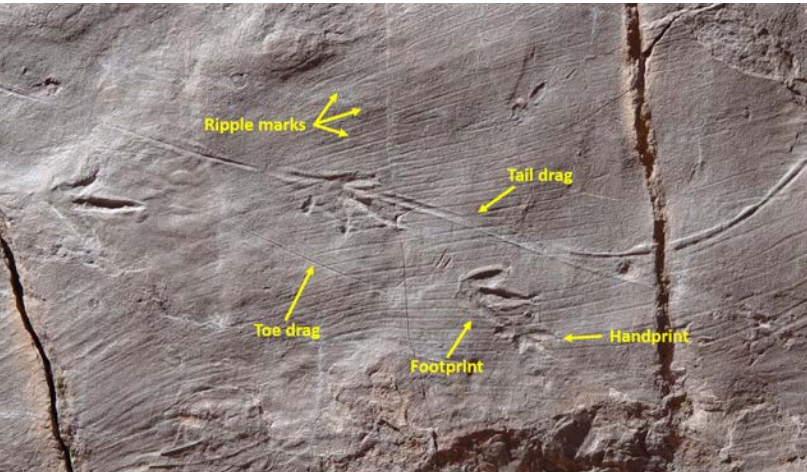
Shelburne Falls, MA 01370

The "Glacial Potholes" began to form after the last glacier age when the Deerfield River first started to flow over these rocks, about 14,000 years ago. The formation of these river-eroded features are thanks to Lake Hitchcock, the great glacial lake that filled the CT Valley.

Bridge of Flowers

22 Water St, Shelburne Falls, MA 01370

The bridge is a historic (1908) bridge adorned with graceful arches. It has long been a source of inspiration for people in all walks of life - painters and photographers, poets and gardeners, as well as those who come simply to bask in the beauty of the flowers in every season.



Dinosaur Footprints

1099 US-5, Holyoke, MA 01040

Imagine small herds of dinosaurs on the shore of a shallow tropical lake as you enjoy a real, up-close look at hundreds of fossilized prints. Paleontologists believe the prints were left by some of the earliest known dinosaurs, from small plant-eaters to large meat-eaters up to 20 feet long.

For the Foodies

Fine Dining

Tavern on the Hill
Holyoke

Blue Heron
Sunderland

Hope and Olive
Greenfield

Calico
Easthampton

The Watershed
Montague

Eastside Grill
Northampton

**Caminito
Steakhouse**
Northampton

Galaxy
Easthampton

Osaka
Northampton

**Nini's
Ristorante**
Easthampton

India House
Northampton

Spoletto
Northampton

Casual Dining

**Daily Operation
Easthampton**
American with well
sourced ingredients

**Kisara Sushi
Easthampton**
Sushi

**Pulse
Hadley**
100% plant-based

**Gombo
Northampton**
NOLA kitchen &
oyster bar

**Iya
South Hadley**
Ramen and sushi

**Johnny's Tavern
South Hadley**
American

**Crave
Holyoke**
Modern Puerto Rican

**Mission Taco
Easthampton**
Mexican

**Antonio's
Easthampton**
Pizza

**Amanouz
Northampton**
Moroccan

**Bueno y Sano
Northampton**
Mexican

**Local Burger
Northampton**
Burgers

**Paul and
Elizabeth's
Northampton**
Pescatarian

**Oriental Taste
Northampton**
Chinese

For the Foodies

Cafes

Familiars

Northampton

Shelburne Falls

Easthampton

The Water's

Fine

Easthampton

Small Oven

Northampton

Haymarket

Northampton

Bread Euphoria

Williamsburg

Crepes Tea

House

Southwick

Jakes

Northampton

Silver Spoon

Easthampton

Treats

Herrell's

Northampton

Flavors of

Cook Farm

Hadley

Pie Bar

Florence

Mt. Tom's Ice

Cream

Easthampton

Gooseberry

Farms

West Springfield

Ana Bandeira

Chocolates

Northampton

Lime Red

Northampton

Atkins Farm

Hadley

Sweeties Fine

Chocolate

Hadley

Tart

Northampton

Drinks

Glendale Ridge

Southampton

Black Birch

Vineyard

North Hatfield

Tunnel Bar

Northampton

The Dirty Truth

Northampton

Tree House

Brewery

Deerfield

Abandoned

Building

Brewery

Easthampton

Gigantic

Easthampton

10 Forward

Greenfield

Luthiers Co-op

Easthampton

Packards

Northampton

Art Lovers



Park Hill Orchard

**82 Park Hill Rd
Easthampton, MA 01027**

This working farm offers 95 varieties of perennial fruit in the form of raspberries, blueberries, blackberries, peaches, nectarines, plums, pluots, cherries, pears and apples. It also offers a farm stand and a half-mile walking sculpture trail.



MASS MoCA

**1040 Mass MoCA Way
North Adams, MA 01247**

The Massachusetts Museum of Contemporary Art (MASS MoCA) is one of the world's liveliest centers for making and enjoying today's most evocative art. While it's admittedly the farthest attraction from the venue, it is one of the most brilliant museums in the state with a focus on large-scale, immersive installations.



Emily Dickinson Museum

**280 Main St
Amherst, MA 01002**

The Emily Dickinson Museum is the birthplace and home of famous 19th-century American poet Emily Dickinson, whose poems were discovered in her bedroom there after her death.

Adventures in the Easthampton Mills



Go with the Float



Prodigy



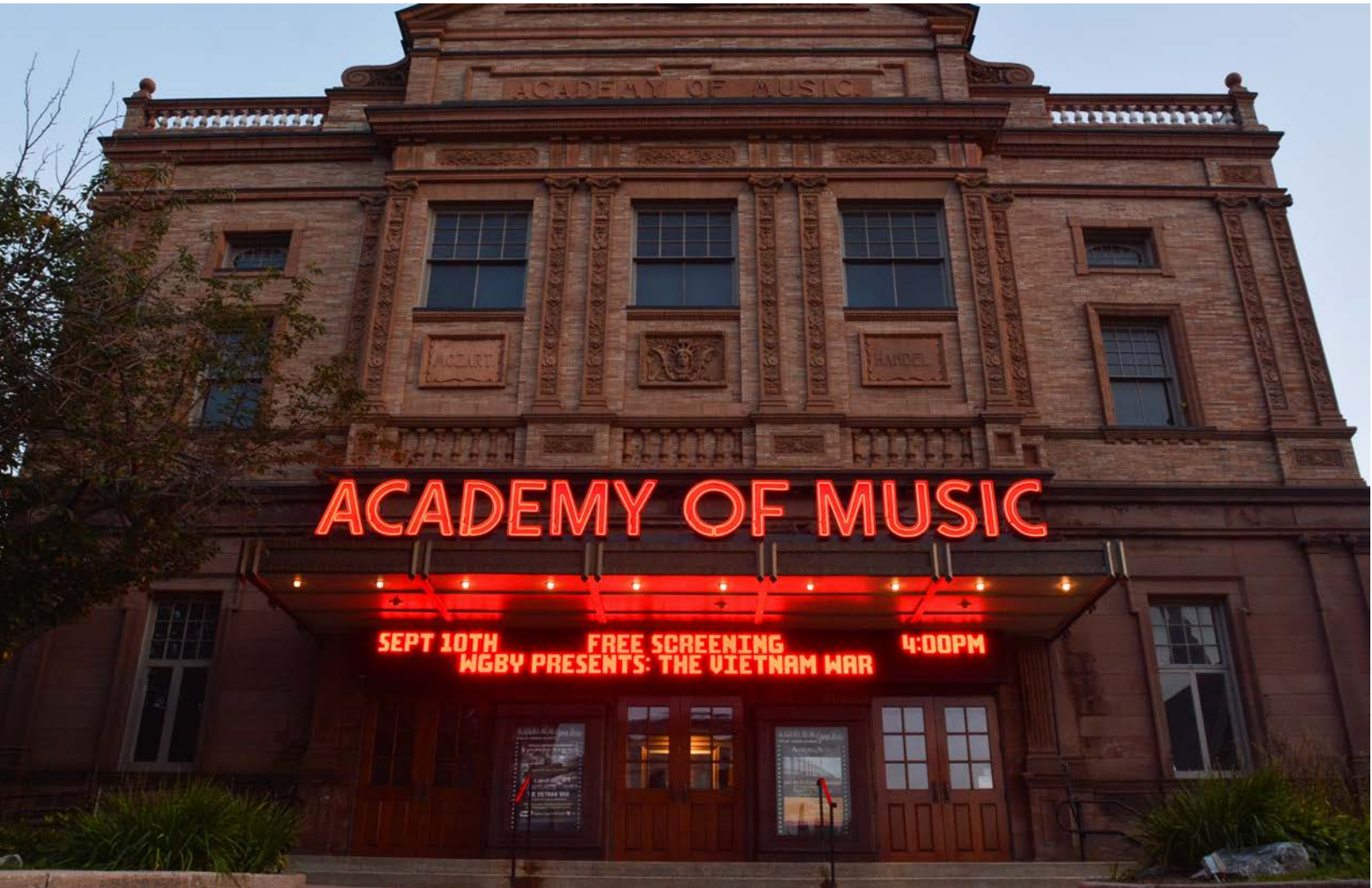
**Sacred Roots
Healing (Yoga)**



Juggernaut Glass



Riff's Joint



Live Music

The Marigold
Easthampton

Luthiers Co-op
Easthampton

10 Forward
Greenfield

Academy of Music
Northampton

Gateway City Arts
Holyoke

Treehouse Brewery
Deerfield

Hawkes and Reed
Greenfield

Day Trips

Montague

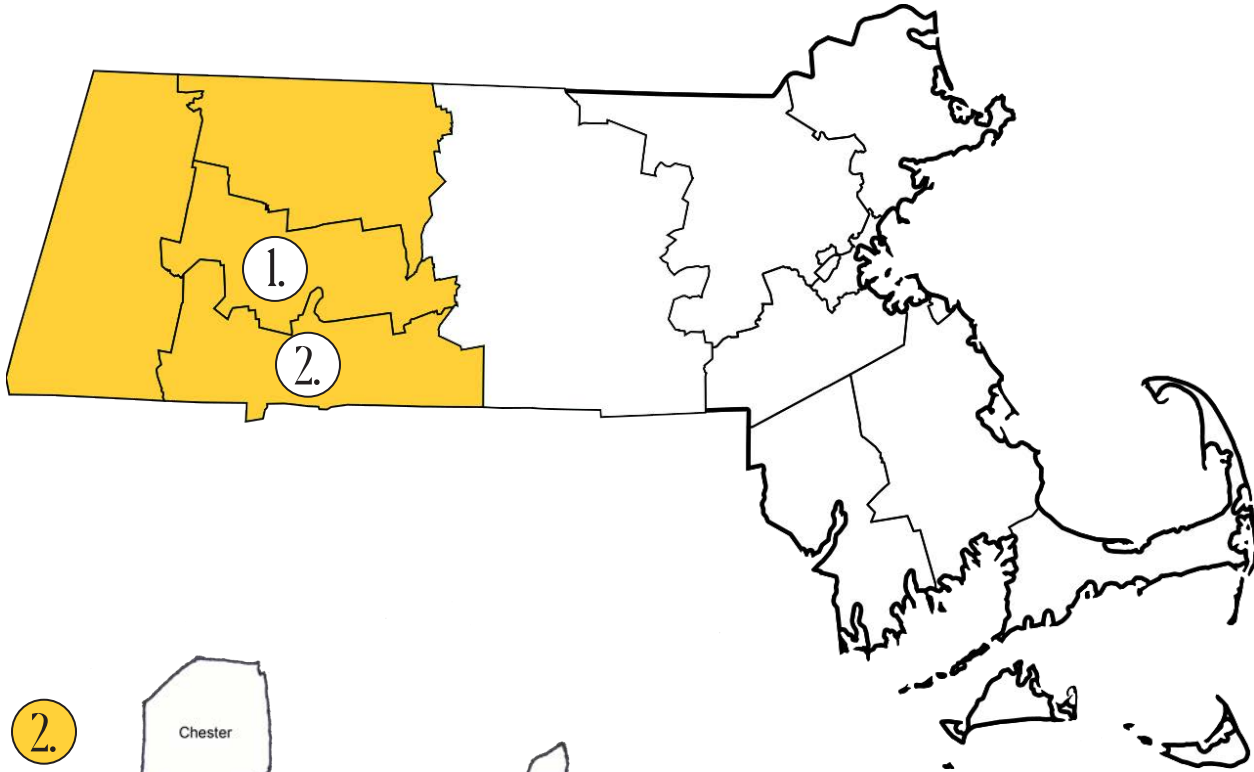
The Montague Book Mill	Peace Pagoda	The Watershed
440 Greenfield Rd Montague, MA 01351 Start the day off with books you don't need in a place you can't find! Maybe get tea or coffee at the Lady Killgrew Cafe or some music at Turn It Up!	100 Cave Hill Rd Leverett, MA 01054 Walk at this nearby Buddhist stupa and be surrounded by nature and large koi ponds. It was built in 1985 to provide a place for people of all creeds to unite in their search for world peace.	440 Greenfield Rd Montague, MA 01351 Enjoy high quality food while sitting on the the river to round your day out with a delicious dinner.

Deerfield

Historic Deerfield	Yankee Candle Flagship	Tree House Brewing
Old Main St Deerfield, MA 01342 Take a walk back in time, to the heart of an 18th-century colonial village. Visitors can tour twelve carefully-preserved antique houses dating from 1730 to 1850, and explore world-class collections.	25 Greenfield Rd South Deerfield, MA 01373 As the flagship, this Yankee Candle has a candle emporium with over 200,000 candles, a general store, an indoor Bavaria Villiage, food, and a Wax Works center where you can make or dip your own custom candle!	1 Community Pl South Deerfield, MA 01373 Grab beer to go, or enjoy a draft pour and pizza. This enormous brewery carries a wide variety of fresh beer, cold brew, and seltzer.

Western MA

1.



2.

